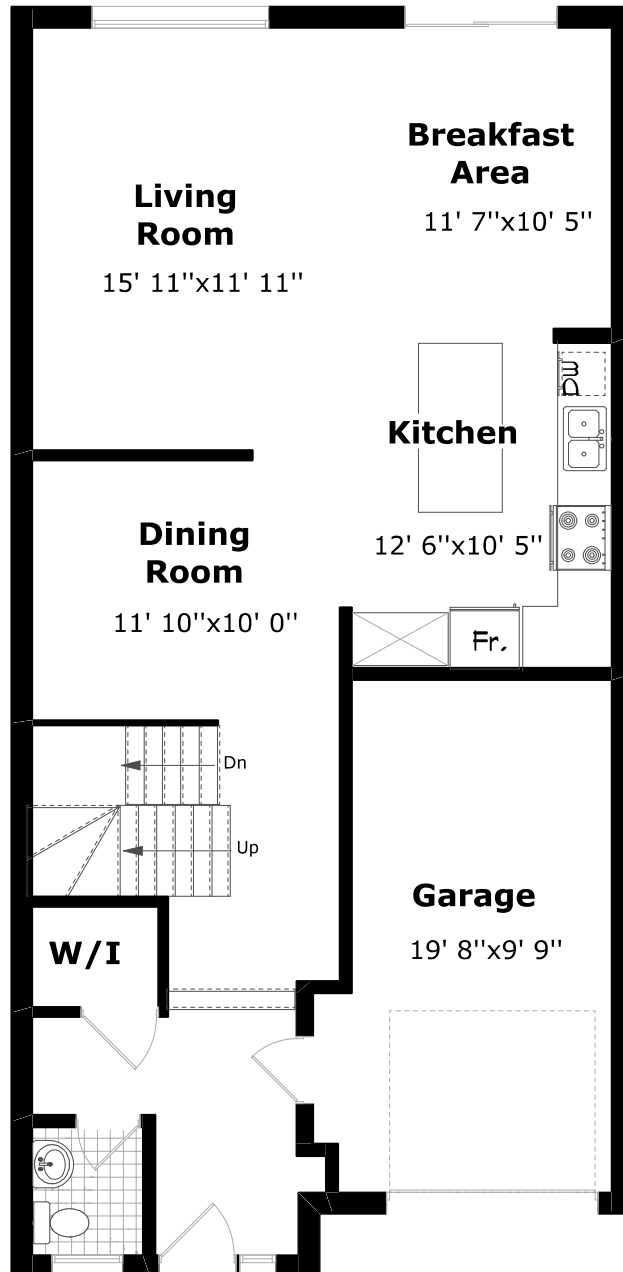
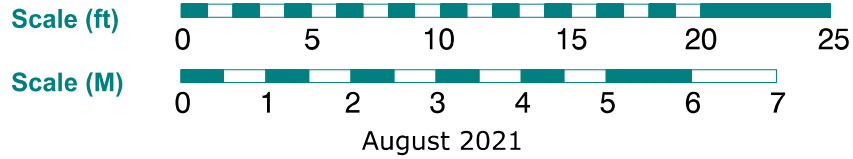


3298 Jacob Way



Main Floor Plan

915.4 sq. ft. +

233.1 sq. ft. (Garage)

9' 0" Ceiling



Measurements may not be 100% accurate. Floor Plans provided for illustrative purposes only. Room sizes not used to calculate area.

3298 Jacob Way

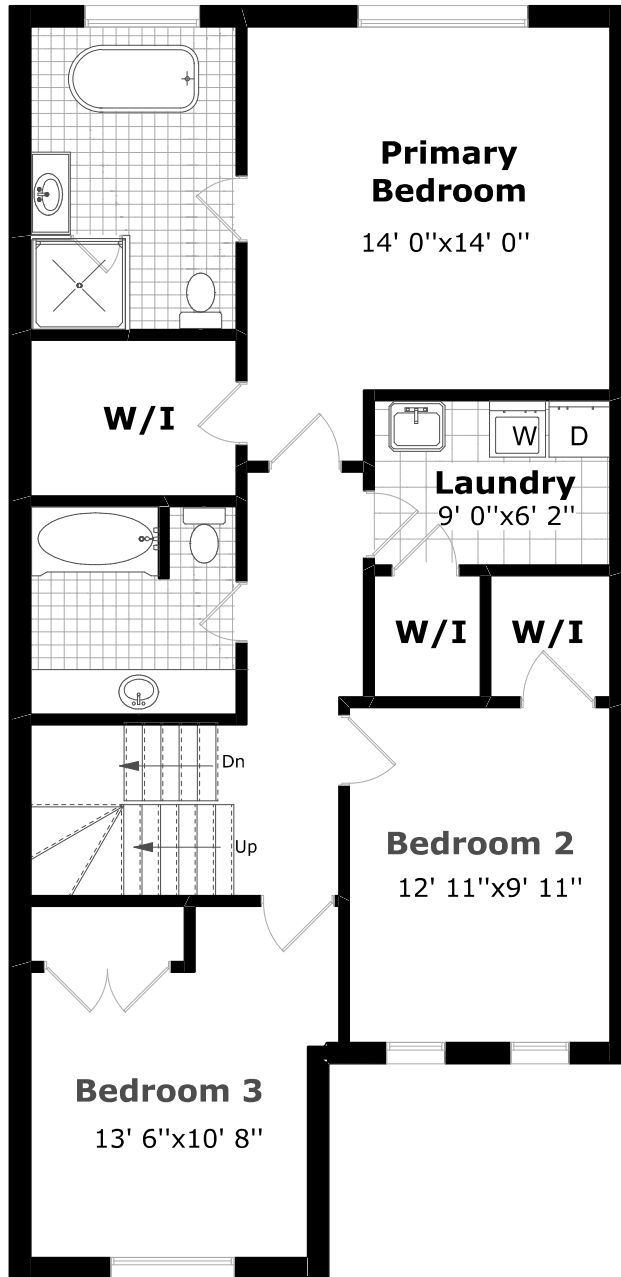
Scale (ft)



Scale (M)



August 2021



2nd Floor Plan

1,082.3 sq. ft.

9' 0" Ceiling

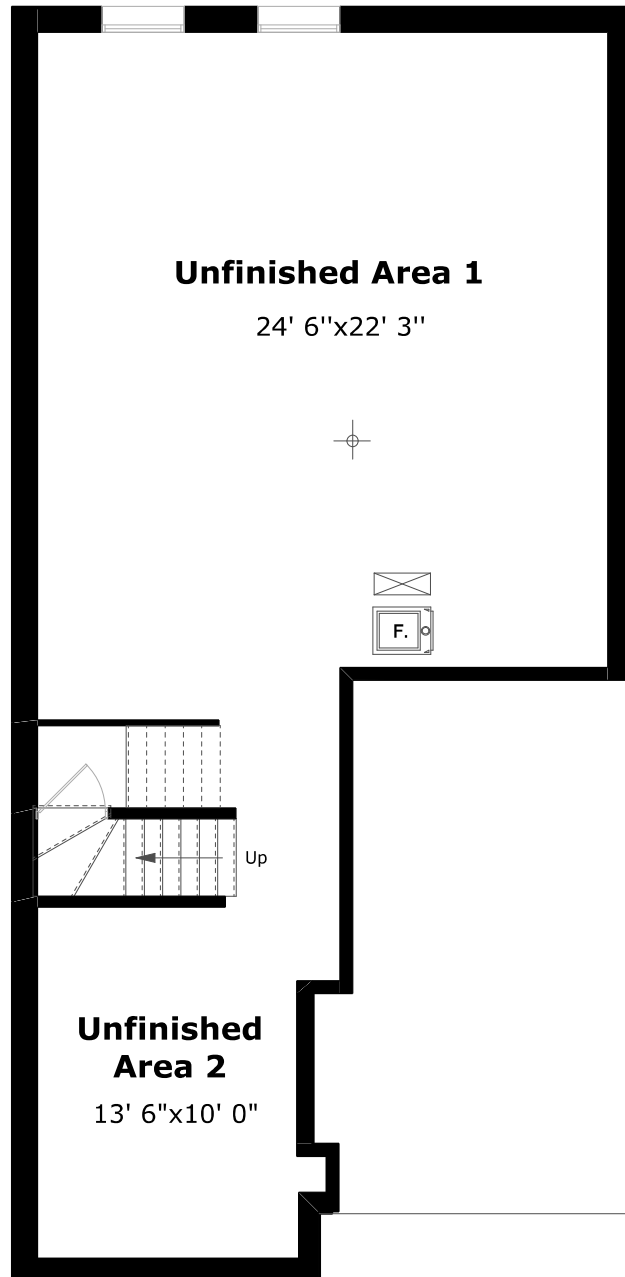


Measurements may not be 100% accurate. Floor Plans provided for illustrative purposes only. Room sizes not used to calculate area.

3298 Jacob Way



August 2021



Lower Level Plan

915.4 sq. ft.



Measurements may not be 100% accurate. Floor Plans provided for illustrative purposes only. Room sizes not used to calculate area.